



- Ground water is the only source of water for the MD of Greenview.
Water is provided in the following applications:
 - 6 Water points/truck fills
- 3 Water treatment plants connected to distribution lines that supply residents in the Hamlets of DeBolt, Ridgevalley and Little Smoky
- 2 Rural Distribution lines (water supplied by the Town of Valleyview)

- TREATED POTABLE WATER POINTS
- Sunset House – Sweet House – New Fish Creek
- Pre-chlorination
 - Greensand filtration
 - De-chlorination
 - Ion exchange
 - Reverse Osmosis
 - Chlorination
 - Truck/Tank fill service
 - Provides adjacent community halls with water and backup generator power



RAW WATER POINTS

- Grovedale, South Wapiti, Crooked Creek, Goodwin
 - Well water
 - Pumped into storage tanks
 - Chlorination(tested)
- Puskwaskau, Sandy Bay
 - Pumps directly from the well
 - No chlorination



HAMLET – DISTRIBUTION SYSTEMS

Little Smoky

- Pre-chlorination
- Manganese green sand filtration
- De-chlorination
- Ion exchange
- Reverse Osmosis
- Chlorination
- Truck/Tank fill service
- Provides residents through distribution system

DeBolt

- Pre-chlorination
- Granular activated carbon filtration
- Reverse Osmosis
- Chlorination
- Provides residents through distribution system

Ridgevalley

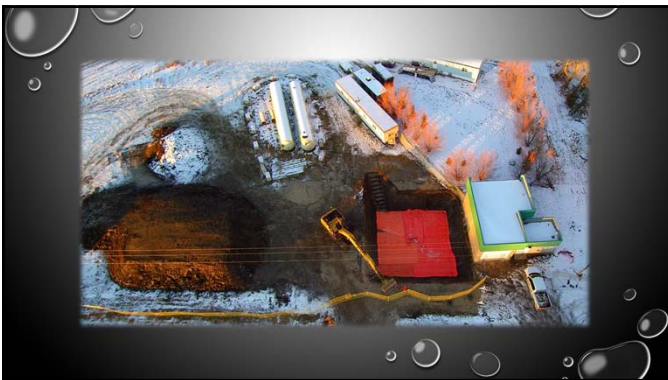
- Well water
- Pumped into storage tanks
- Chlorination
- Provides residents through distribution system

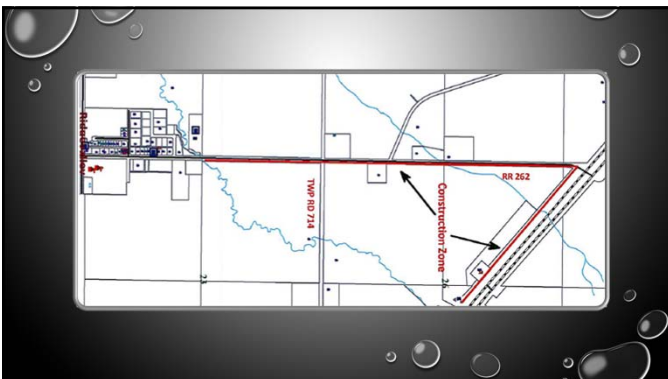
RIDGEVALLEY WATER PLANT UPGRADE

- Drilled additional well for long term (25 year) anticipated demand
 - Construction of additional water storage reservoir
- Construction and installation of 2 reverse osmosis treatment systems to provide water to the Hamlet of Ridgevalley which will connect to the Crooked Creek water distribution line

CROOKED CREEK DISTRIBUTION LINE

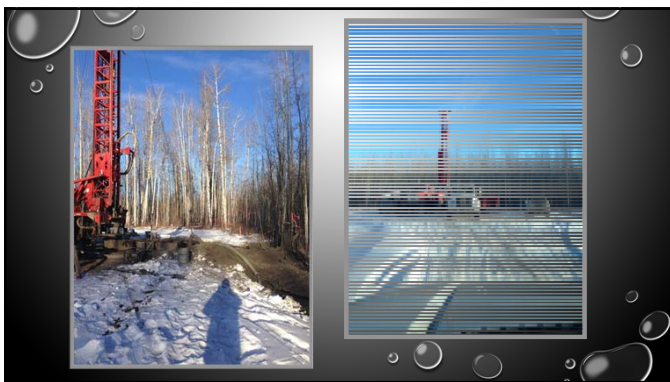
- Construction of a 3.7 km water line
- Supplies Crooked Creek water point with treated water
- Estimated to supply up to 44 residents (approx. 119 people) directly North of Ridgevalley





GROVEDALE WATER TREATMENT PLANT

- Drilled 2 test wells to obtain a reliable long term ground water source
- Design and construction of a reverse osmosis water treatment plant to begin in 2017
- Water distribution system for Landry Heights and Grovedale to begin in 2017



GRANDE CACHE WATER WELL RECLAMATION

- A large number of water wells require reclamation to help ensure the integrity of the ground water aquifers
- Prevents the contamination of ground water by surface water



INDUSTRIAL LAGOON

- Provides sewage disposal site for industrial camps, businesses and residents of Greenview
- Located between the Hamlet of Little Smoky and the Town of Fox Creek

